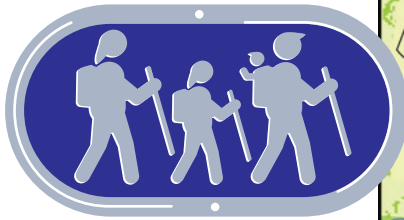


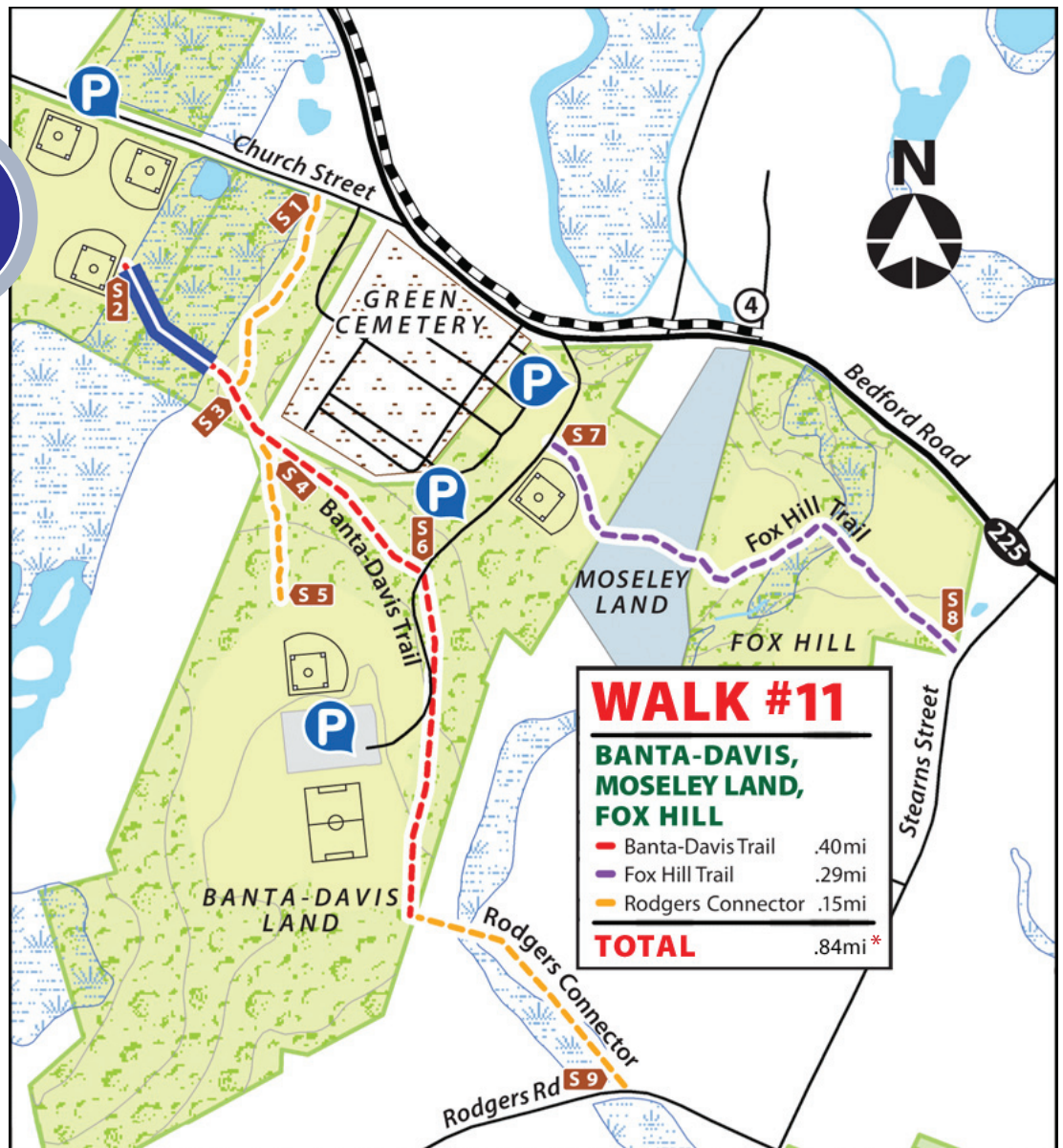
Carlisle  
COMMUNITY



Trails Day  
CHALLENGE

Sponsored by the  
Carlisle Conservation Foundation  
& Carlisle Trails Committee

Note:  
The "4" in a circle  
at the end of the  
pathway across from  
the Moseley Land  
indicates the location  
of Kimball's Ice Cream.



\*Note, the TOTAL distance shown above is the combined lengths of the trails shown. Walking all the trails will require some doubling back of some trail sections as well as connecting between the trails via Rodgers Road, Stearns Street, and some of the Banta-Davis access drive, so the total distance will be longer.

For more complete maps and a description of the trails and the lands that Walk #11 traverses, see pages 10 & 11 of the the 2018 Edition of *Trails in Carlisle*, the ideal reference for the *Carlisle Community Trails Day Challenge*. The trails book is available for purchase for \$10 at Town Hall or \$15 at Ferns.